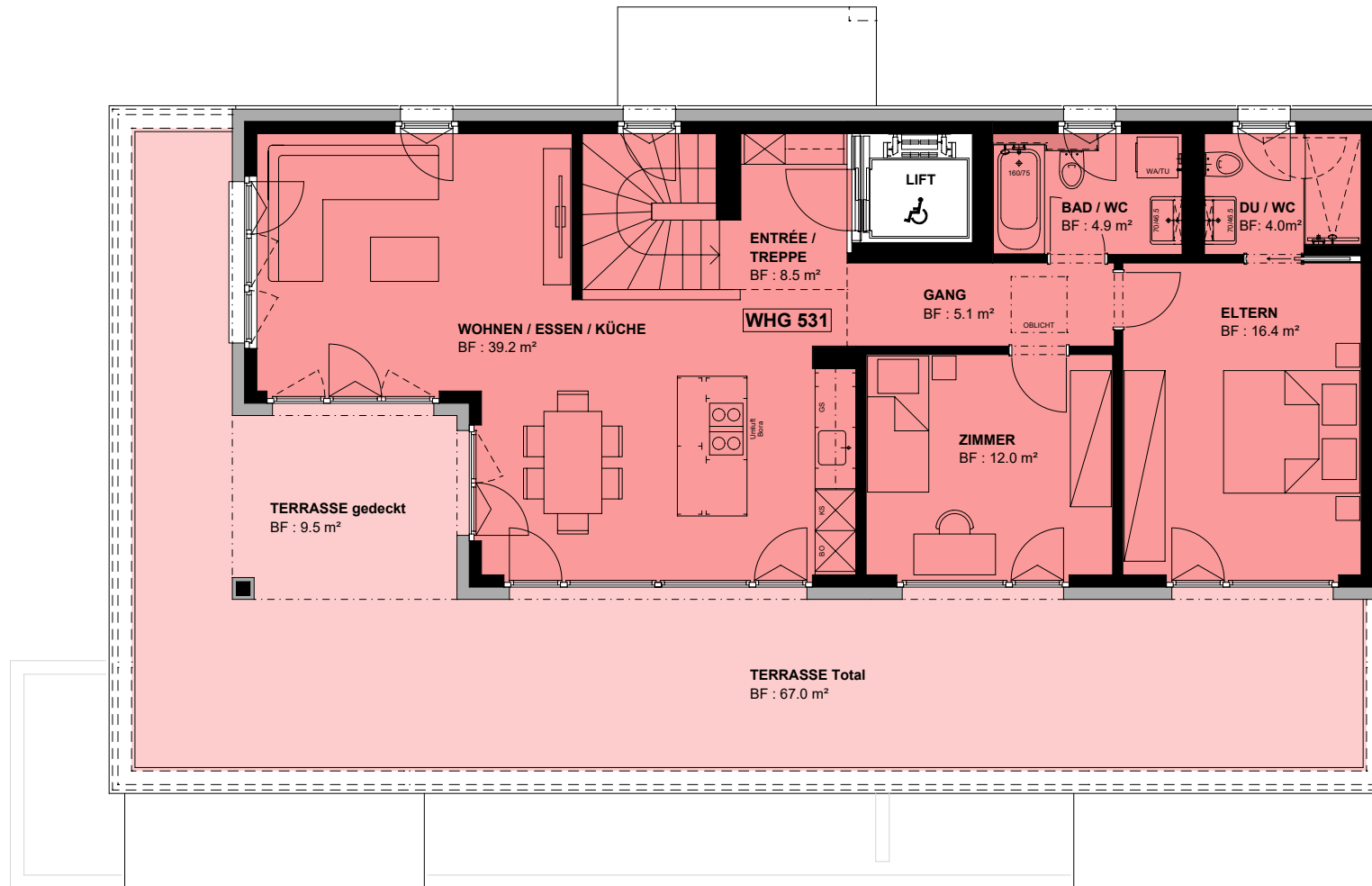
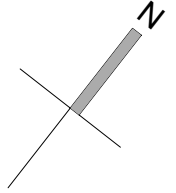


# 205 - Neubau "Waldegg" Herisau - Haus 5

ATTIKA - Ebene 5 / 1:100 (Format A4) / 24.06.2021/et



## 3 1/2 Zimmer Wohnung 531

Nettowoohnfläche : 90.1 m<sup>2</sup>

Bruttowoohnfläche : 92.3 m<sup>2</sup>

Terrasse Total : 67.0 m<sup>2</sup>

Terrasse gedeckt : 9.5 m<sup>2</sup>